

*To arrange a viewing contact us
today on 01268 777400*



Eastwood Road, Rayleigh Guide price £650,000

Aspire are pleased to present this truly unique and character filled four bedroom home, positioned along the sought after Eastwood Road in Rayleigh. Offering generous living space, a beautifully landscaped rear garden and a layout full of charm, this is a home that stands out from the crowd.

From the moment you enter, the property gives a real sense of space. The large entrance porch leads into a bright and welcoming reception hall, creating an impressive first impression. The ground floor continues with a separate dining room, ideal for entertaining, along with a fitted kitchen and breakfast area, utility room, home office and a convenient ground floor shower room.

To the rear, the home opens into a spacious L shaped living room with two sets of sliding doors leading directly onto the garden. This room provides a fantastic family space, perfect for relaxing, hosting and enjoying views over the landscaped outside space.

The first floor offers four bedrooms, with the main bedroom benefiting from fitted wardrobes. The remaining bedrooms are well proportioned, giving flexibility for family living, guests or additional working from home space. A family bathroom completes the first floor.

Externally, the rear garden is a real feature of the home. Beautifully landscaped and arranged across different sections, it includes a paved seating area, lawn, mature shrubs, trees, fishpond, sheds and a summerhouse, creating a peaceful and private space to enjoy throughout the year.

To the front, the property benefits from a driveway providing off street parking for multiple vehicles, along with garage access.

Eastwood Road is a convenient and well connected location, within easy reach of local amenities, bus links, nearby schools, Rayleigh High Street and Rayleigh Station, making this a brilliant option for families and commuters alike.

This is a rare opportunity to secure a spacious and individual home in a fantastic Rayleigh location. Early viewing is highly recommended.

GUIDE PRICE ***£650,000 - £700,000***

Entrance Porch: 11'7" x 5'2"

Reception Hall: 11'9" x 10'9"

Dining Room: 12'9" x 11'9"

Study / Office: 6'9" x 4'5"

Kitchen / Breakfast Room: 16'9" x 15'4"

Living Room: 21'10" x 16'6"

Bedroom One: 13'2" x 12'4"

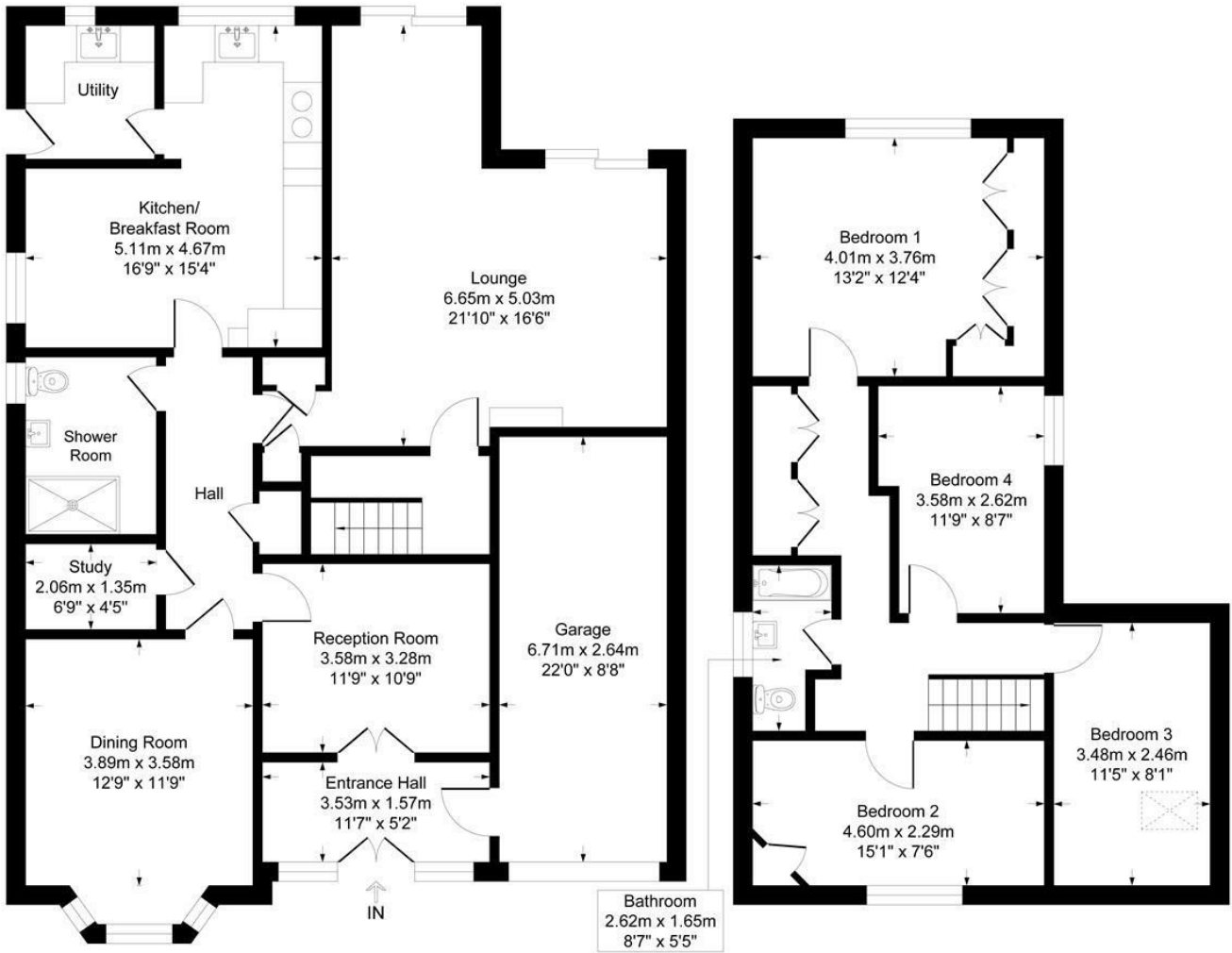
Bedroom Two: 15'1" x 7'6"

Bedroom Three: 11'5" x 8'1"

Bedroom Four: 11'9" x 8'7"

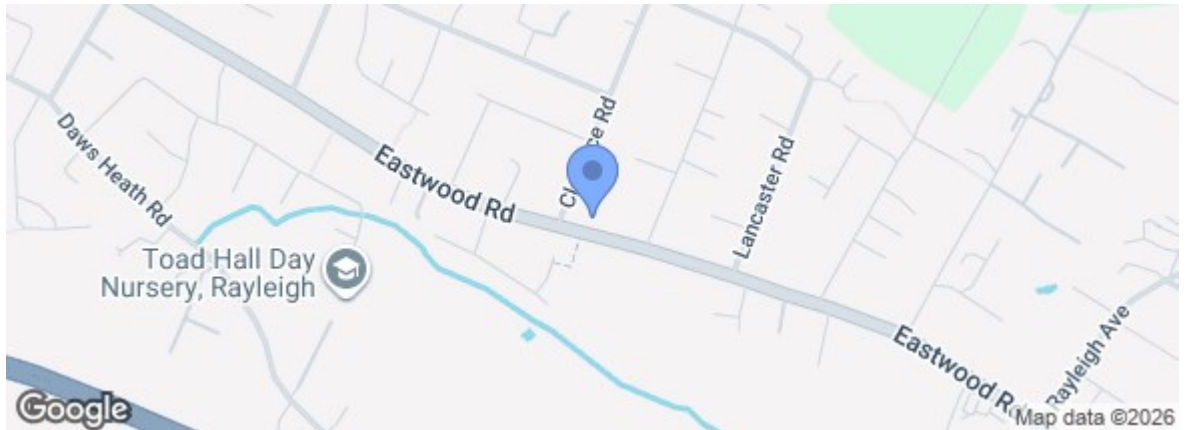
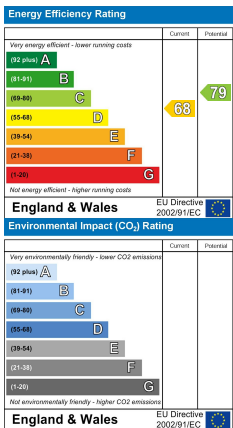
Eastwood Road

Approximate Gross Internal Floor Area = 194.3 sq m / 2092 sq ft



Ground Floor

First Floor



Under the Property Misdescriptions Act 1991 we make every effort to ensure our sales details are accurate but they are a general outline and do not constitute any part of an offer or contract. Any services, equipment and fittings have not been tested and no warranty can be given as to their condition. We strongly recommend that all the information provided be verified by your advisors and in particular, measurements required for a specific purpose such as fitted furniture or carpets. Please tell us if you have any problems and members of our branches will help either over the phone or in person. A copy of our complaints procedure is available on request. The details are issued on the strict understanding that any negotiations in respect of the property named herein are conducted through Aspire Estate Agents.